



**Church Hill, 12 Old St. Johns Road, St. Helier, Jersey, JE2 3TF**  
**£2,200**



## Old St. Johns Road, Jersey, JE2 3TF

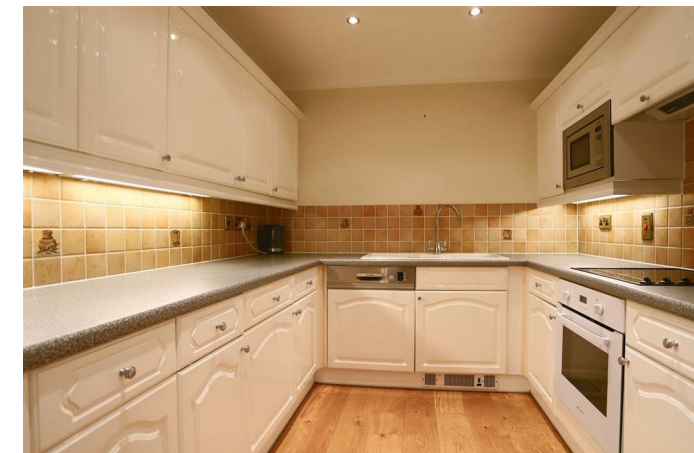
An unqualified property, available to any persons with REGISTERED status.

Extremely spacious purpose built apartment with lift access, resting on elevated ground on the outskirts of town. This apartment benefits from amazing views over the rooftops of St Helier and towards the sea front from the South East facing balcony. The living accommodation comprises: entrance hall, a modern open plan living/dining/kitchen room, 2 double bedrooms (the master with an en suite and a range of fitted furniture) and a house bathroom. The property is located within a short walking distance of town, park and beachfront.

Undercover secure parking for two cars and visitor parking. Available from 12th May. £2,200p/m

### VIEWING

Please call Slomans, Sole Agents on 87 97 87. Please note that all areas and measurements given in these particulars are approximate and rounded. The text, photographs and floor plans are for general guidance only.





Slomans Estate Agents.  
17 La Colomberie, St Helier,  
Jersey JE2 4QB  
T: 01534 879787  
E: sales@slomans.co.uk



